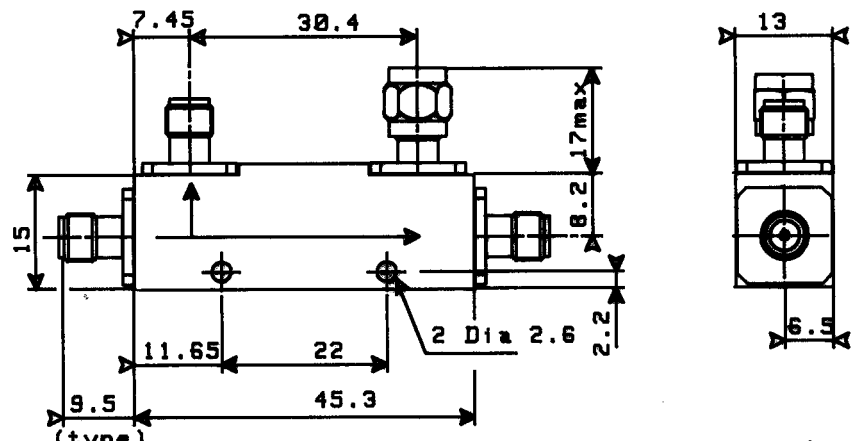




TITLE **20 dB 2 - 8 GHz DIRECTIONAL COUPLER**

LTR. **A**

DRAWING:



3 SMA/f connectors

General tolerance: ± 0.5 mm

ELECTRICAL CHARACTERISTICS:

FREQUENCY RANGE	: 2 - 8 GHz
IMPEDANCE	: 50 Ohms
COUPLING (1)	: 20 dB \pm 1 dB
FREQUENCY SENSITIVITY	: ± 0.4 dB
DIRECTIVITY	: 20 dB mini
INSERTION LOSS	: 0.4 dB max.
V.S.W.R.	: 1.25 max.
AVERAGE POWER	: 50 W CW at 25°C
PEAK POWER	: 3 kW (1 μ S, 1%) at 25°C

MECHANICAL CHARACTERISTICS:

CONNECTORS	: SMA female per MIL C 39012
TERMINATION (on isolated port)	: 50 Ω 1 W
MAXIMUM WEIGHT	: 40 g

ENVIRONMENTAL CHARACTERISTICS:

OPERATING TEMPERATURE RANGE	: - 25°C + 85°C
STORAGE TEMPERATURE RANGE	: - 40°C + 100°C

(1) Frequency sensitivity is included in coupling.

Tentative data subject to change without notice.

PEN	QUALITY Dpt App.						
	MO	04 MARS 1992					
CAT	B						
PAGE	DATE	NAME	LTR	REVISIONS		DATE	APP.
1/1	03/03/92	K.LUCIEN					